



BWI TIGER

THE TIGERS' WATCH

November 30, 2012 - Vol. 001 Issue 004



Booker Washington Institute National Alumni Association of North America

BWINAANA - P. O. Box 893 - Elk River, MN 55330 - www.bwitiger.org - P. 763-234-6433 - F. 763-441-3716

IT'S NOT ABOUT US, IT'S ABOUT BWI

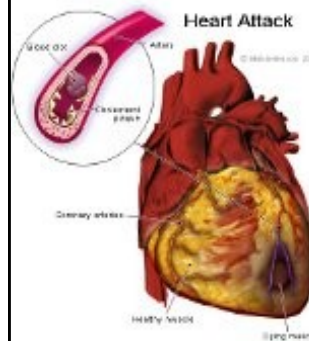
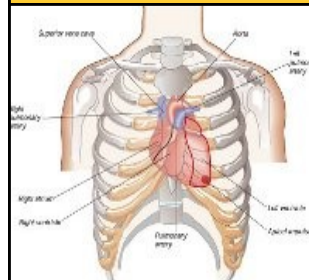
Georgia Chapter Hosts Successful EC

The BWI Tigers stormed the city of Lawrenceville, Georgia for the BWI-NAANA 22nd EC meeting. The business meeting of the EC was attended by 32 members representing 12 of the 14 chapters of the BWINAANA. The EC among other things approved the Phelps Stoke Learning Resource Center Project on BWI. My **HEARTS OFF** for the Georgia Chapter for a hosting a successful EC Meeting.

EC Re-constitutes

The BWINAANA National President, A. Zaccheus Payne recommended the Tuskegee University, Phelps Stoke Fund, Inc., Hennepin Technical College, Liberian Embassy accredited near Washington, Brooklyn Park-Kakata Sister City Project, Hon. Anthony Selli, Hon. Ada Hage, Victor Ward Foundation, Hon. Zacharia White and Hon. Joe Flomo Matthew to the BWINAANA Board of Advisors. The recommendation was unanimously approved by the EC.

Heart Attack & Hot Water



The Chinese and Japanese drink hot tea with their meals, not cold water, maybe it is about time that we adopt their drinking habit while eating. It is nice to have cold drink after meal. However, the cold water will solidify the oily stuff that you have just consumed. This will slow down the digestion. Once this sludge reacts with the acid, it will break down and be absorbed by the intestine faster than the solid food. It line the intestine. Very soon, this will turn into fats and lead to cancer. It is best to drink hot soup or warm water after a meal.



President's Corner: What's on the Plate

Whenever you make a difference in someone else's life, you add value to your life. Sincere appreciation is extended to individuals, businesses and organizations that have graciously given sponsorships to the F. Amadu Sirleaf Scholarship on BWI in Liberia, West Africa.

Titanium Level (\$353 & above)
BWINAANA-SWC, GLC, MNC, RIC & MAC

Platinum Level (\$176 - \$352)

Rev. Dr. & Mrs. Francis O. S. Tabla

Gold Level (\$100 - \$175)

National V. P Sebastain Teah

Silver Level (Up to \$99)

Mr. & Mrs. G. Zubah Kpanaku

D. Ralph Henri Named Governor to BWI Board

President Payne named Mr. Daniel Ralph Henri as his choice to represent the BWINAANA on the BWI Board of Governors. In a letter of appointment, Mr. Payne told Mr. Henri that he is confident the Mr. Henri, 2-Term national president will sure be an asset to the BWI Board. Mr. Henri's appointment takes immediate effect replacing Hon. Arthur Watson who aptly represented the BWI-NAANA on the board for the passed four years. Hon. Watson has been recalled to serve in an advisory role to the National President.

Around BWI & BWINAANA

1. BWINAANA fully represented at the Home-going celebration of Beatrice Wilson cousin of Western RVP Topee Jackson in the Brutal Minneapolis killing on November 24, 2012. Pleas call Topee @ 763.443.2366 to sympathize.
2. Please call Romell Whyte of the NCC @ 704.212.7669.
3. Please call Mother Mai Grisby of the GLC @ 313-623.0635
4. Please call Alumnus Etmara Alladin of the GAC @ 770.339.2456
5. Former National President Emmett Fiawoo had a successful surgery on November 27, 2012. Mr. Fiawoo is home recovering. He can be reached @ 240.462.6061
6. Alumnus Joma Mitchell, VP of the BWINAANA-DVC underwent a successful surgical repair on November 23, 2012. He is comfortably resting at home. He can be reached @ 267.971.6227

IT'S NOT ABOUT US, IT'S ABOUT BWI